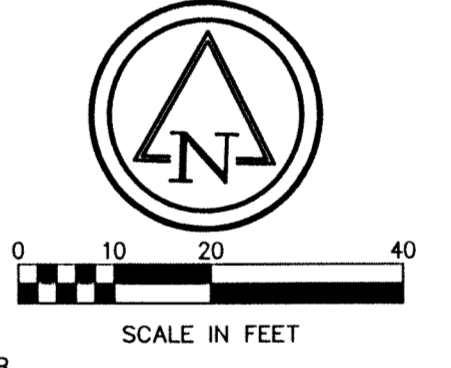
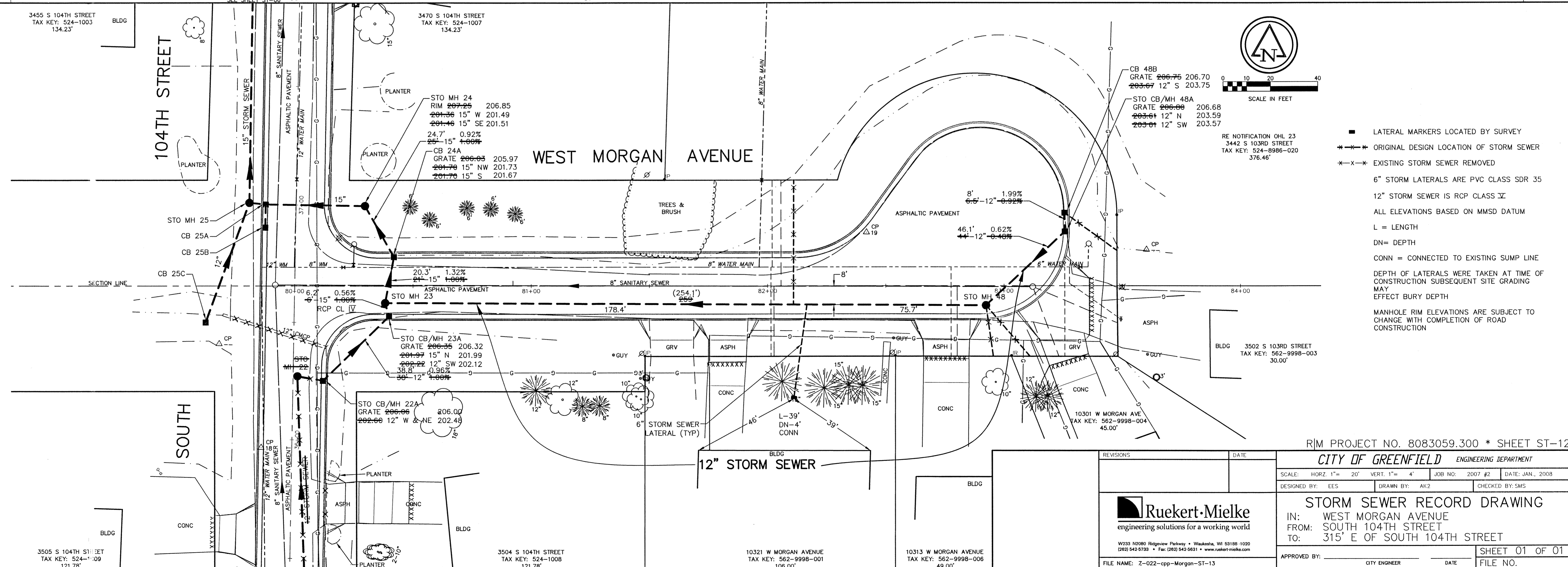


RECORD DRAWING	
GENERAL CONTRACTOR	MUSSON
UNDERGROUND CONTRACTOR	MUSSON
INSTALLATION DATE	SPRING 2008
DRAWN BY	CMK
DATE	2008
CHECKED BY	JRW
DATE	2/26/09



- LATERAL MARKERS LOCATED BY SURVEY
- ORIGINAL DESIGN LOCATION OF STORM SEWER
- EXISTING STORM SEWER REMOVED
- 6" STORM LATERALS ARE PVC CLASS SDR 35
- 12" STORM SEWER IS RCP CLASS IV
- ALL ELEVATIONS BASED ON MMSD DATUM
- L = LENGTH
- DN = DEPTH
- CONN = CONNECTED TO EXISTING SUMP LINE
- DEPTH OF LATERALS WERE TAKEN AT TIME OF CONSTRUCTION SUBSEQUENT SITE GRADING MAY EFFECT BURY DEPTH
- MANHOLE RIM ELEVATIONS ARE SUBJECT TO CHANGE WITH COMPLETION OF ROAD CONSTRUCTION

Feb 26, 2009, 12:03pm, PLOTTED BY: CALOSKOWSKI, SAVED BY: CALOSKOWSKI
 G:\Land\8083059.dwg Record drawings\Z-022-cpp-Morgan-ST-13.dwg Layout1
 WSPES: G:\Land\8083059.dwg Views.dwg, G:\Land\8083059.dwg\Diagrams.dwg, G:\Land\8083059.dwg\Plots.dwg, G:\Land\8083059.dwg\Record drawings\Z-022-cpp-Morgan-ST-13.dwg

RIM PROJECT NO. 8083059.300 * SHEET ST-12

REVISIONS		DATE	
CITY OF GREENFIELD ENGINEERING DEPARTMENT SCALE: HORZ. 1" = 20' VERT. 1" = 4' JOB NO: 2007 #2 DATE: JAN., 2008 DESIGNED BY: EES DRAWN BY: AK2 CHECKED BY: SMS STORM SEWER RECORD DRAWING IN: WEST MORGAN AVENUE FROM: SOUTH 104TH STREET TO: 315' E OF SOUTH 104TH STREET APPROVED BY: _____ DATE: _____ CITY ENGINEER FILE NAME: Z-022-cpp-Morgan-ST-13			