

STORM WATER PIPE SCHEDULE

FROM	TO	WATER DISCHARGE (GPM)	SIZE (DIA.)	LENGTH (FT.)	SLOPE (INCH/FT)	MATERIAL
1	3	236	8"	100	1/16	P.V.C.*
2	3	2493	15"	76	1/8	P.V.C.*
3	4	2816	18"	70	1/16	P.V.C.*
4	5	3234	21"	99	1/16	P.V.C.*
5	8	3611	21"	107	1/16	P.V.C.*
6	7	172	12"	93	1/16	R.C.P. CLASS IV
7	8	597	12"	225	1/16	P.V.C.*
8	11	4479	21"	157	1/16	P.V.C.*
9	11	808	8"	14	1/16	P.V.C.*
10	11	191	8"	14	1/16	P.V.C.*
11	12	5478	24"	106	1/16	P.V.C.*
13	14	194	8"	28	1/8	P.V.C.*
14	15	279	8"	39	1/8	P.V.C.*

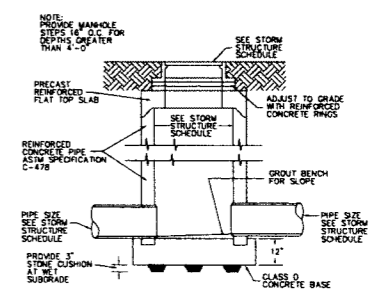
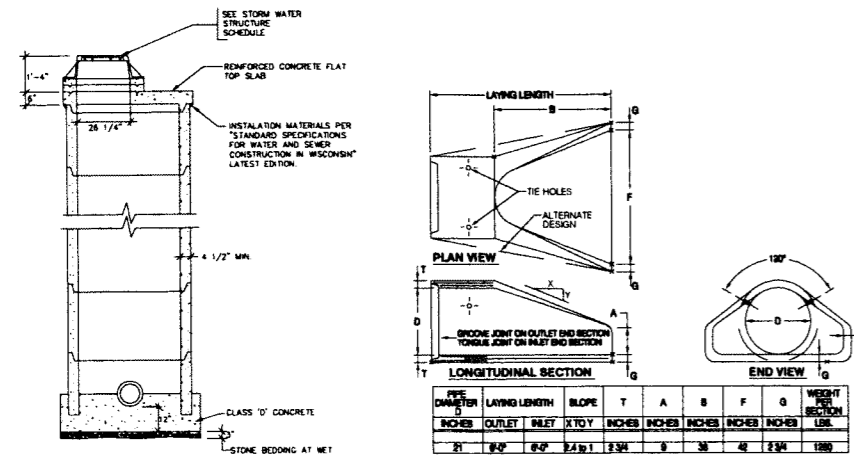
STORM WATER STRUCTURE SCHEDULE

CODE	TYPE	COVER	RIM ELEV.	SIZE (INCHES)	INVERT IN	INVERT OUT	REMARKS
1	36" DIA. STORM INLET	R-3229-A	179.3	8		175.97	
3	36" DIA. STORM INLET	R-3229-A	179.7	8	175.45	174.95	
4	42" DIA. STORM INLET	R-2501	179.0	18	174.58	174.33	
5	42" DIA. STORM INLET	R-2501	178.0	21	173.81	173.56	
6	36" LONG TRENCH DRAIN	R-4990-DX	177.4	12		175.4	
7	36" DIA. STORM INLET	R-2501	178.5	12	174.92	174.67	
8	42" DIA. STORM INLET	R-2501	178.5	12	173.50	172.75	
9	36" DIA. STORM INLET	R-3229-A	176.8	12	173.00	173.25	ISLAB
10	36" DIA. STORM INLET	R-3229-A	176.5	12		173.00	
11	42" DIA. STORM INLET	R-1769-A	177.05	12	172.92	171.83	
13	36" DIA. STORM INLET	R-3229-A	176.8	8		173.00	
14	36" DIA. STORM INLET	R-3229-A	176.8	8	173.70	172.60	

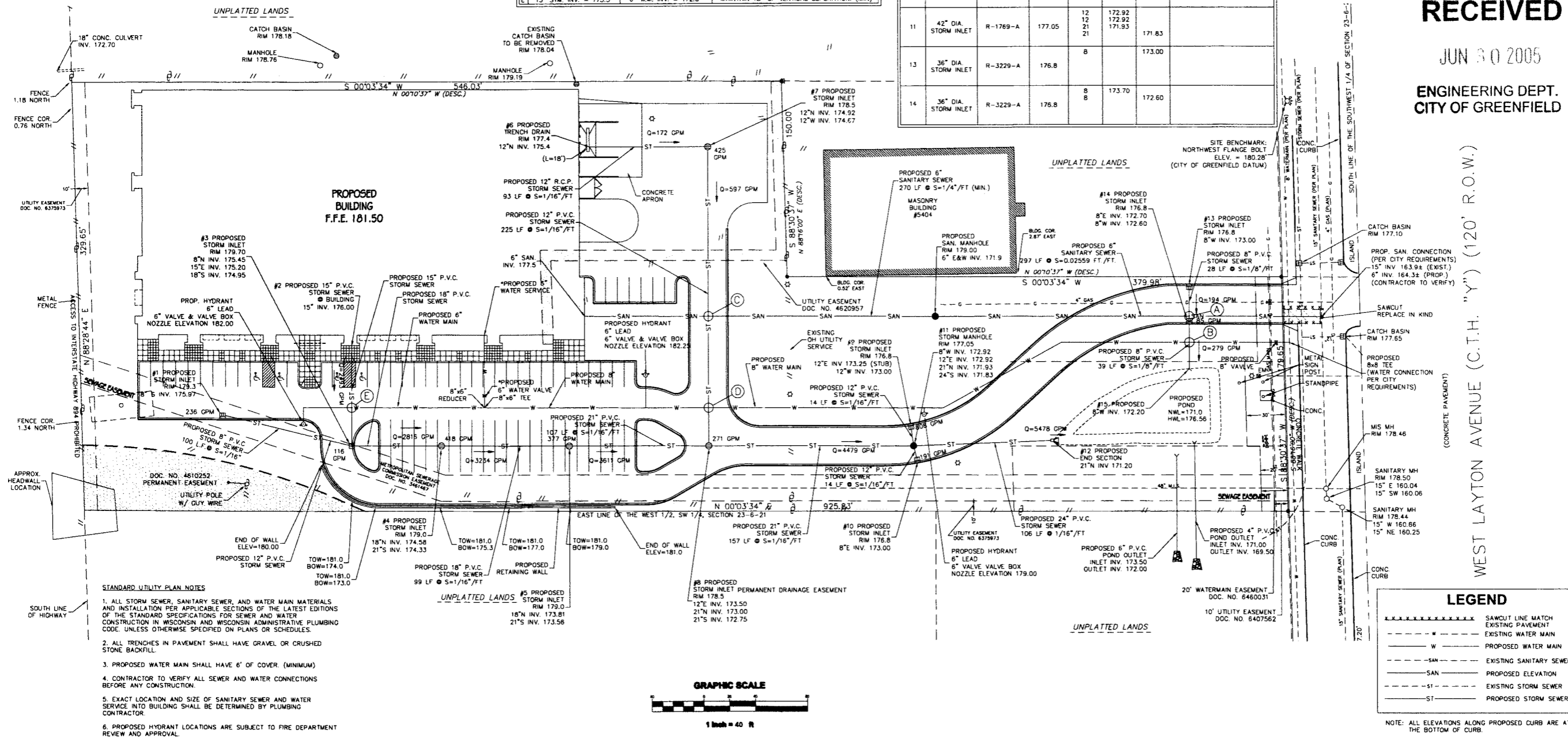
* NOTE: ANY OTHER MATERIAL APPROVED BY THE DEPARTMENT OF COMMERCE, SUCH AS HDPE OR ABS MAY BE SUBSTITUTED FOR PVC STORM SEWER.

CONFLICT POINTS

POINT	ITEM 1	ITEM 2	CONFLICT
A	8" STM. INV. = 172.8	6" SAN. INV. = 166.4	NO CONFLICT
B	8" STM. INV. = 172.4	8" W.M. INV. = 169.5	MAINTAIN 18" OF VERTICAL SEPERATION (MIN.)
C	12" STM. INV. = 174.0	6" SAN. INV. = 175.5	MAINTAIN 6" OF VERTICAL SEPERATION (MIN.)
D	12" STM. INV. = 173.7	8" W.M. INV. = 170.70	MAINTAIN 18" OF VERTICAL SEPERATION (MIN.)
E	15" STM. INV. = 175.5	6" W.M. INV. = 172.8	MAINTAIN 18" OF VERTICAL SEPERATION (MIN.)



RECEIVED
 JUN 30 2005
 ENGINEERING DEPT.
 CITY OF GREENFIELD



UTILITY PLAN
BILT-RITE
5430 WEST LAYTON AVENUE
 GREENFIELD, WISCONSIN

DRAWN BY: PB
 CHECKED BY: MAB
 DATE: 06/17/05
 JOB NUMBER: C05006R5

LEGEND

---	SAW CUT LINE MATCH
---	EXISTING PAVEMENT
---	EXISTING WATER MAIN
---	PROPOSED WATER MAIN
---	EXISTING SANITARY SEWER
---	PROPOSED SANITARY SEWER
---	EXISTING STORM SEWER
---	PROPOSED STORM SEWER

NOTE: ALL ELEVATIONS ALONG PROPOSED CURB ARE AT THE BOTTOM OF CURB.

C2.0

BILT-RITE
 C05006
 SHEET 2 OF 3

8-396

EXHIBIT NO. 1