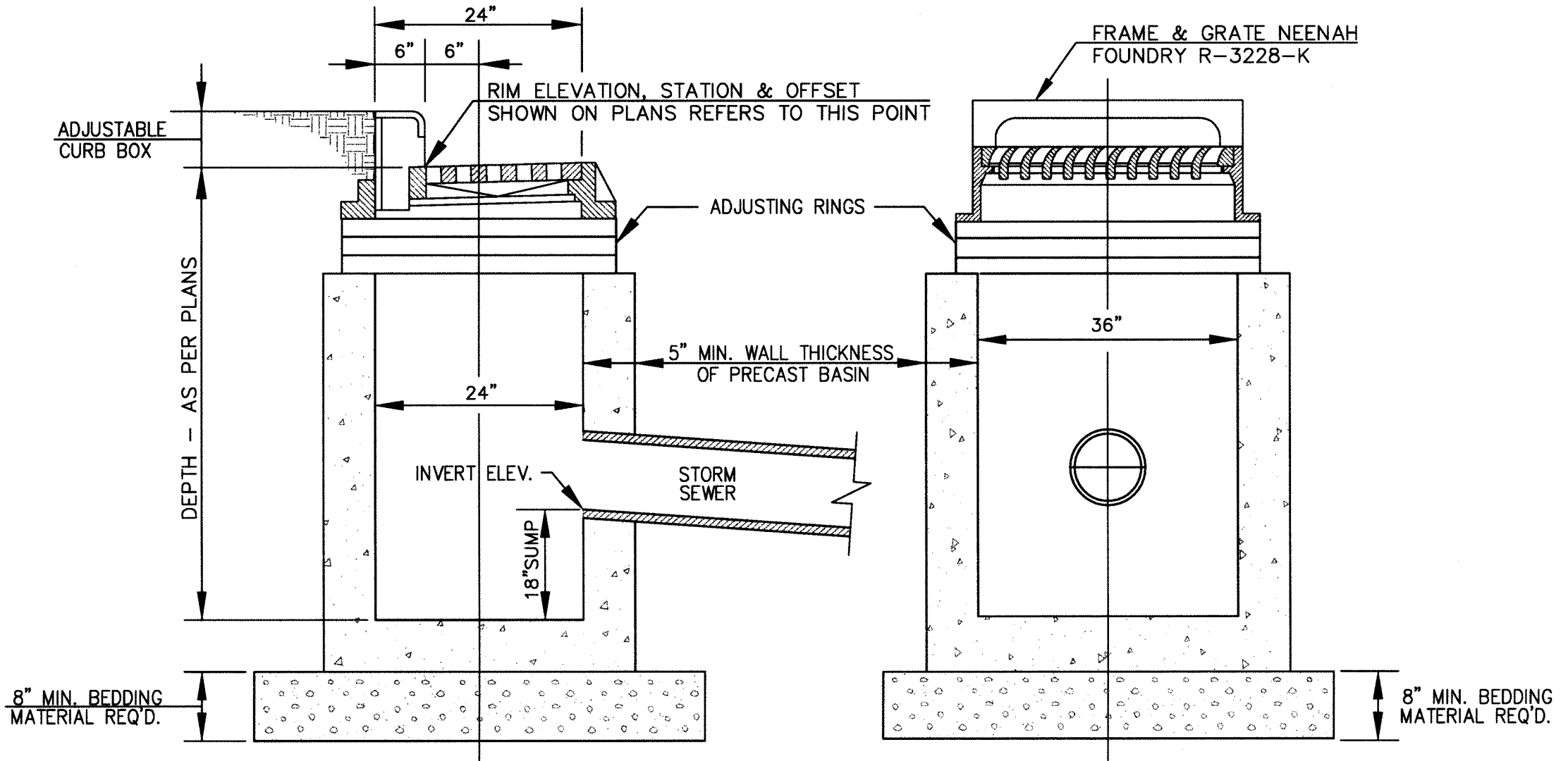


NOTE:

EXPANSION JOINTS IN CURB & GUTTER  
FOR CATCH BASIN STRUCTURE SHALL BE  
LOCATED 10' AWAY FROM FRAME ON  
BOTH SIDES.



1

24"x36 STORM CATCH BASIN WITH  
N.T.S. CURB BOX FRAME & GRATE