



# ICE RINK

# FREE Outdoor Ice Skating

and Skate Rental\*  
at Konkel Park

OPENING WINTER 2022-23

Dates and times are tentative and weather dependent. This is a natural ice rink with no cooling system.

We rely on Mother Nature and weather conditions in order to operate. For the most up-to-date information on daily operations, follow our Facebook group at <https://www.facebook.com/groups/danjansenicerink> or call our cancellation line at (414) 297-9008.

[www.greenfieldamp.com](http://www.greenfieldamp.com)

## REGULAR HOURS OF OPERATION

Monday-Thursday: 4:00-8:00 PM

Friday: 4:00-9:00 PM

Saturday & Sunday: Noon-9:00 PM



FACEBOOK



WEBSITE

Festival Foods Warming Area and Concessions available during hours of operation.

(\*) Free skate rental available on a first come first served basis. Limited supply of sizes available so we cannot guarantee skates for everyone. It is recommended to bring your own skates if possible.

Presenting Sponsors:

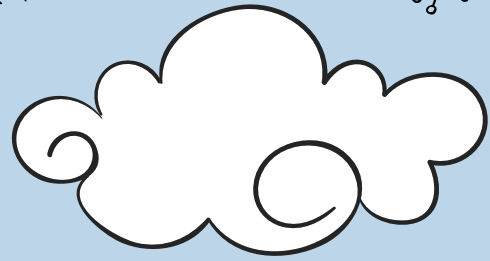
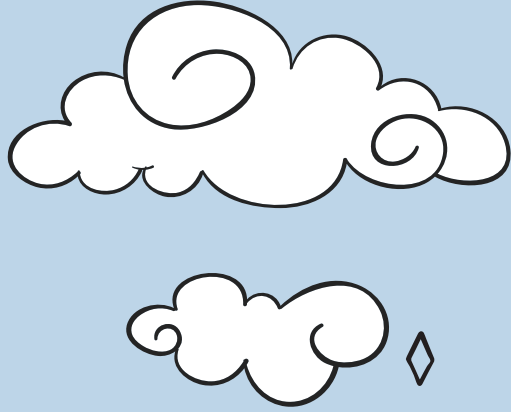


Advance  
Camping Sales



GREATER GREENFIELD LIONS CLUB • EAT RICE • DONALD LEE CARLSON • DUNN'S SPORTING GOODS • WATERSTONE BANK

SPONSORSHIP OPPORTUNITIES AVAILABLE. CONTACT THE PARKS & RECREATION DEPARTMENT AT (414) 329-5370



# RINK RULES

- All users of the Dan Jansen Family Fest Ice Rink skate at their own risk.
- Only ice skating is permitted on the ice rink.
- Please stay home if you have any of the following symptoms: cough, shortness of breath or difficulty breathing, fever, chills, muscle aches, headache, body aches, vomiting, diarrhea, new loss of taste or smell.
- No more than 30 people on the rink at any time.
- Hockey is not allowed at any time unless authorized.
- Please change shoes and skates in designated area.
- When wearing skates off the ice, please walk on rubber surfaces only.
- No one permitted on ice without skates.
- Please use caution when entering and exiting the ice.
- No sitting on dasher boards, counters, or table tops.
- All skaters age 6 and under must be supervised at all times by their parent or guardian.
- Alcohol, tobacco, or vaping products prohibited on the ice and warming area.
- Food, beverages, and chewing gum not allowed on the ice.
- No carrying children or secondary items (i.e. cameras, phones) while on the ice.
- No Dogs or pets of any kind.
- No sleds or snowmobiles.
- FREE skate aids/walkers are available for use any time the rink is open. First come, first served.
- We promote clean, fun, friendly, and safe behavior. No fighting, horseplay, snowball throwing, profane language, or other behavior that may contribute to injury to yourself or others.

The City of Greenfield reserves the right to close the rink at any time. The rink will be closed for inclement weather, rain, ice, or snow. Staff has the discretion to close early if attendance is low or unsafe ice conditions exist.

**The City of Greenfield is not responsible for lost or stolen belongings.**



**For the most up-to-date information and cancellations follow us on Facebook at <https://www.facebook.com/groups/danjansenicerink>**

**24 Hour Cancellation Line: (414) 297-9008**

**To report any concerns, please call (414) 329-5370**

**For further information visit: [www.greenfieldparksrec.com](http://www.greenfieldparksrec.com) | Facebook @gfwiparksrec**

Warming Area Presenting Sponsor:

