



2024 Annual Report

Municipality: Greenfield

Submitted by: Jeff Tamblyn, Senior Project Manager

Date Submitted: June 3, 2025

Please submit completed forms by July 31, 2025.

Instructions for submitting completed annual report forms:

1. Log into the MMSD Municipal Portal.
2. Drag and drop the document into your municipality folder and leave as unassigned.

Please enable macros. Fields will expand as you type.

The pre-populated information is based on submittals. Please add additional information as appropriate. Click or double click on cells that say “choose an item” to see drop-down menu choices.

Section 1: Chapter 2, Design and Construction of Sewers and Ancillary Facilities

Sewer Plans

1. Listed are the sewer plans the District reviewed this year. Please indicate if the sewer was constructed and inspected. This will satisfy [Ch 2.406](#), Annual Reports.

Plan Name	Was this Sewer Constructed?	Inspected During Construction?
Layton Preserve	Yes	Yes
	Choose an item.	Choose an item.
	Choose an item.	Choose an item.
	Choose an item.	Choose an item.
	Choose an item.	Choose an item.
	Choose an item.	Choose an item.

If the sewer was constructed, please submit As-Builts with this submittal or upload to the portal by July 31, 2025. Please include the MMSD associated plan number in the file title of all submitted As-Builts.

2024 Annual Report

2. As-Builts for the following sewer plans have not yet been submitted. Please include the As-Builts with this submittal or upload to the portal by July 31, 2025. Please include the MMSD associated plan number in the file title of all submitted As-Builts. If you have any additional comments/questions regarding a specific As-Built, please list these after the plan name. This will help satisfy the requirement listed in Ch 2.406(3).

Plan name	As-built submitted?
Layton Preserve (2024-7) Sewer built, but the as-built is not fully completed at this time	Yes - partial
Parkview Estates Subdivision (2022-65) Sewers not built yet – expected in summer/fall 2025	<input type="checkbox"/>
Pearson Point Development (2019-52) Sewer was not built. Project has been withdrawn.	<input type="checkbox"/>
W. Bridge St. (2009-59) As-built uploaded to municipal portal in May 2024. Include again	<input checked="" type="checkbox"/>
West Coldspring Road Reconstruction (2009-56) We have no idea what this project is	<input type="checkbox"/>
Carleton Place Subdivision (2009-49) Sewer was not built. Project has been withdrawn	

Flow Allocations

3. Listed are the flow allocation requests the District approved this year. Verify that the assumptions used accurately reflect what was constructed. The District will adjust flow allocations if the actual number of units constructed (reflected in the worksheet as people) or number of acres assumed for commercial or industrial sites changed between approval of the flow allocation worksheet and construction. Answering this question will help satisfy [Ch 2.210](#), Compliance with Flow Allocations.

Site name and sewershed	Number of people or acres assumed in the request	Construct ed?	If an adjustment is requested, what number of people or acres should be used to recalculate flows?
No Flow allocation submitted in 2024		Choose an item.	
		Choose an item.	
		Choose an item.	

2024 Annual Report

Section 2: Chapter 13, Surface Water and Stormwater

Stormwater Management

4. Listed are the stormwater management plans (SWMPs) the District reviewed this year. Please indicate the inspection and maintenance activities completed this year. Attach photos in the pages at the end of this report. Answering this question will satisfy [Ch 13.401\(1\)](#), Annual Reports.

Site Name	Inspected?	Maintained?	Inspection/ Maintenance Activities
Layton Preserve Development	Yes	Yes	Basin was built and certified in 2024
	Choose an item.	Choose an item.	
	Choose an item.	Choose an item.	

Green Infrastructure

5. Listed are the green infrastructure (GI) plans approved by the District this year. Please answer the questions below and attach inspection photos in the space provided at the end of this report. Answering this question will satisfy [Ch 13.401\(4\)](#), Annual Reports.

Site Name	Type	Capacity (gallons)	Constructed?	Maintained?
No GI plan submitted in 2024			Choose an item.	Choose an item.
			Choose an item.	Choose an item.
			Choose an item.	Choose an item.

FEMA map revisions

6. Please list any FEMA map revisions (submitted or approved Conditional Letter of Map Revision (CLOMR) or Letter of Map Revision (LOMR) approval) and floodplain zoning changes this year. Answering this question will satisfy [Ch 13.401\(2\)](#) under Annual Reports.

Watercourse	FEMA ID Number	Status
None		

2024 Annual Report

Storm sewers

7. List projects that increased the diameter of a storm sewer to a diameter greater than 36 inches.

Project Location	Watershed	Previous Diameter (inches)	Previous Capacity (cfs)	New Diameter (inches)	New Capacity (cfs)
None	Choose an item.				
	Choose an item.				
	Choose an item.				
	Choose an item.				
	Choose an item.				

Watercourse connections

8. Please list any new watercourse connections constructed this year.

Watercourse Connection Location	Watercourse	Does this connection have a watercourse connection number from the District?
None	Choose an item.	Choose an item.
	Choose an item.	Choose an item.

Increased capacity of outfalls

9. Please list any new projects (completed this year) that increased the capacity of stormwater conveyance system outfalls to a jurisdictional watercourse or outfalls by more than 50%.

Project Location	Watershed	Previous Capacity (cfs)	New Capacity (cfs)
None	Choose an item.		
	Choose an item.		
	Choose an item.		
	Choose an item.		

Removal of impervious surfaces

10. **Optional.** Please list any new projects (completed this year) that reduced runoff by removing impervious surfaces. This information could be used for [Ch 13.303\(6\)](#), Off-site Removal of Impervious Surface.

Project Location	Watershed	Area of Removed Imperviousness (acres)
10941 W Layton Ave	Root	1.37
	Choose an item.	
	Choose an item.	

2024 Annual Report

	Choose an item.	
	Choose an item.	
	Choose an item.	

Section 3: General

Authorization letter

11. If consultants represent the municipality as either the municipal engineer or the municipal reviewer, please provide an updated letter on municipal letterhead. Include the first and last name, title, engineering firm, and email address of those authorized to submit plans on behalf of the municipality for District review.
12. Please list any new industrial users that have started operations or changed their name in 2024. This information will be shared with MMSD Water Quality Protection as part of [Ch 11 Discharge and Enforcement Procedures](#).

Name of company	Address
<i>None that we are aware of</i>	

Section 4: Green Infrastructure Maintenance for MMSD-funded GI

13. The following applies only to GI funded by the BMP Partnership Program, Green Infrastructure Partnership Program, Green Solutions or the Regional Green Roof Initiative. Inspection photos can be uploaded in the space provided at the end of this report.

Municipal Green Infrastructure Projects:

Site Name and Location	Type	Capacity (gallons)	Contract Number	Constructed?	Maintained?	Photos?
<i>Greenfield Creekwood Park & 5065 S 43rd St, Greenfield, WI 53220</i>	<i>Bioswale</i>	<i>187,848</i>	<i>M03076P37/W96001P05</i>	Yes	Yes	Yes
<i>Greenfield Konkel Park & 5151 West Layton Avenue, Greenfield, WI 53220</i>	<i>Bioswale</i>	<i>90,709</i>	<i>M03076P38</i>	Yes	Yes	Yes
<i>Greenfield City Hall Rebuild & 7325 W Forest Home Ave, Greenfield, WI 53220</i>	<i>Permeable Pavement</i>	-	<i>G98005P16</i>	Yes	Yes	Yes
<i>2019 Stormwater Trees & Along W Edgerton Ave</i>	<i>Stormwater Trees</i>	<i>9,050</i>	<i>G98005P21</i>	Yes	Yes	No

2024 Annual Report

<i>from S 27th St to W Loomis Rd, W Midland Drive from S 51st St to city limits, W Wilbur Ave from S 51st St to city limits, S 52nd St from W Midland Dr to city limits, S 53rd St from W Midland Dr to city limits</i>						
<i>2020 Stormwater Tree Program & W Van Beck Ave, W Whitaker Ave, W Plainfield Ave, W Abbott Ave, W Holmes Ave, W Mangold Ave, W Ramsey Ave, W Morgan Ave, W Waterford Ave, S 94th St, S 27th St, Greenfield, WI 53221</i>	<i>Stormwater Trees</i>	<i>16,975</i>	<i>G98005P48</i>	<i>Yes</i>	<i>Yes</i>	<i>No</i>
<i>2021 Stormwater Trees & Municipal right-of-ways in Greenfield</i>	<i>Stormwater Trees</i>	<i>15,400</i>	<i>G98005P78</i>	<i>Yes</i>	<i>Yes</i>	<i>No</i>
<i>Greenfield Honey Creek at Konkel Park & Konkel Park, 5151 W Layton Ave, Greenfield, WI 53220</i>	<i>Wetland</i>	<i>-</i>	<i>G98005P86</i>	<i>Yes</i>	<i>Yes</i>	<i>Yes</i>
<i>Greenfield Konkel Park, 5151 W Layton Ave, Greenfield, WI 53220</i>	<i>Stormwater Trees</i>	<i>7,550</i>	<i>G98005P136</i>	<i>Yes</i>	<i>Yes</i>	<i>No</i>

Section 4: Inspections

Inspection photos

To upload GI inspection photos, please click on the picture icon in the center of the blue boxes. Click on the space below the blue boxes to add the project name and location.

2024 Annual Report



Creekwood



Creekwood



Creekwood



Creekwood



Konkel Park Bio-retention



Konkel Park Bio-retention



Konkel Park Bio-retention



Konkel Park Bio-retention



Konkle Park Bio-retention



City Hall Bio-retention



City Hall Bio-retention



City Hall Bio-retention

2024 Annual Report



City Hall Bio-retention



City Hall pavers



City Hall pavers



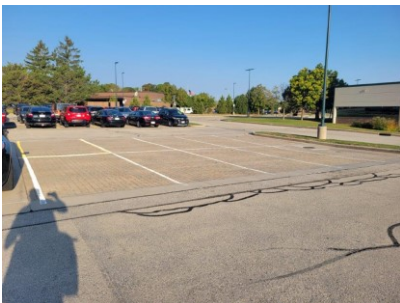
City Hall pavers



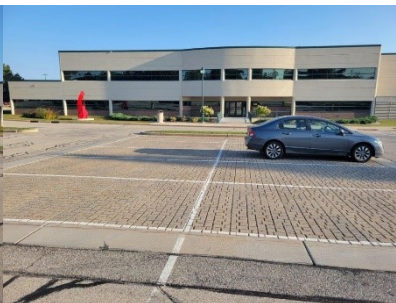
City Hall pavers



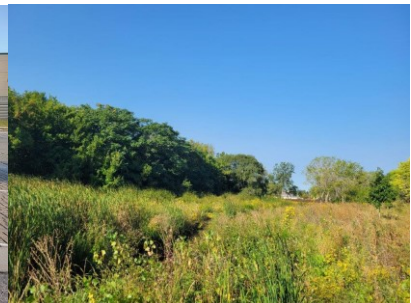
City Hall pavers



City Hall pavers



City Hall pavers



Konkel Park wetland

2024 Annual Report



Konkle Park wetland



Konkel Park wetland



Konkel Park wetland



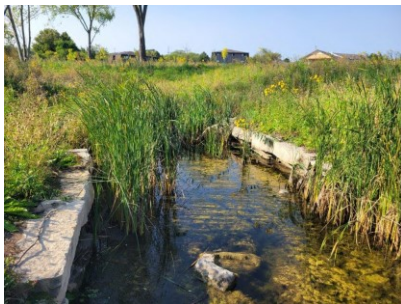
Konkel Park wetland



Konkel Park wetland



Konkel Park wetland



Konkel Park wetland



Konkel Park wetland



Konkle Park wetland

2024 Annual Report



Konkel Park wetland

Konkel Park wetland

Konkel Park wetland